

# NLCSV MANUAL



## **NEWRON SYSTEM**

25-27 Boulevard Victor HUGO  
31770 COLOMIERS (France)

T: +33 (0)5 61 15 18 45

F: +33 (0)5 61 15 16 44



---

# S U M M A R Y

---

<b>Introduction .....</b>	<b>5</b>
<b>installing nlcsv .....</b>	<b>6</b>
<b>Registering CSV Plugins .....</b>	<b>7</b>
<b>NLCSV Plugins presentation .....</b>	<b>8</b>
4 different plugins .....	8
<b>NLDatabaseFromCSV .....</b>	<b>9</b>
Launch NLDatabaseFromCSV .....	9
General view .....	9
Generate database from a CSV file .....	10
Export database to a CSV file .....	10
<b>NLBindingsFromCSV .....</b>	<b>11</b>
Launch NLBindingsFromCSV .....	11
General view .....	11
Create bindings from a CSV file .....	12
Remove bindings from a CSV file .....	12
Export bindings to a CSV file .....	13
<b>NLconfigurationFromCSV .....</b>	<b>14</b>
Launch NLConfigurationFromCSV .....	14
General view .....	14
Export configurations to a CSV file .....	15
Apply configurations from a CSV file .....	16
<b>NLCommissionFromCSV .....</b>	<b>18</b>
Launch NLCommissionFromCSV .....	18
General view .....	18
Commission from a CSV file .....	19
Generate CSV file .....	19

---

# PICTURES

---

Picture 1 : Plugin registration window .....	6
Picture 2 : NL220 PlugIn registration window .....	7
Picture 3 : NLDatabaseFromCSV general view.....	9
Picture 4 : NLBindingsFromCSV.....	11
Picture 5 : NLConfigurationFromCSV general view .....	14
Picture 6 : NLCommissionFromCSV general view .....	18

# INTRODUCTION

Thank you for choosing NLCSV software member of NLSuite.

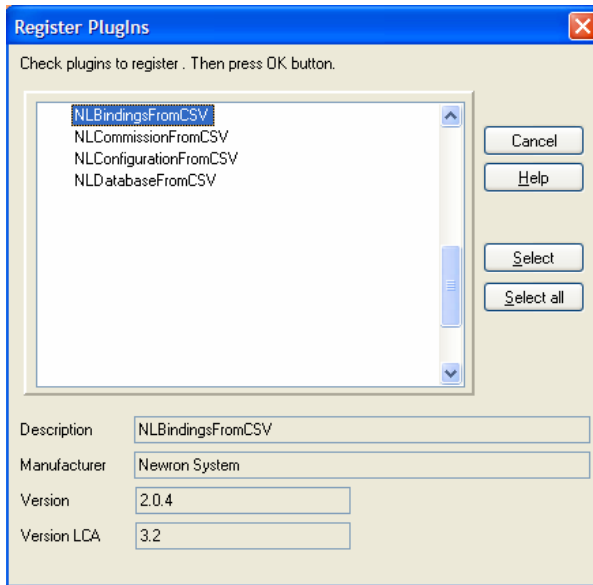
We are happy to help you in your LonWorks integration job. All softwares of NLSuite are often updated for correcting bugs and improve performances. We propose to you to check version on Web site [www.newron-system.com](http://www.newron-system.com).

# INSTALLING NLCSV

Launch the executable file you retrieved from the website or a cd.

The CSV plugins shall normally be installed in “C:\Program Files\Newron System\NLcsv”.

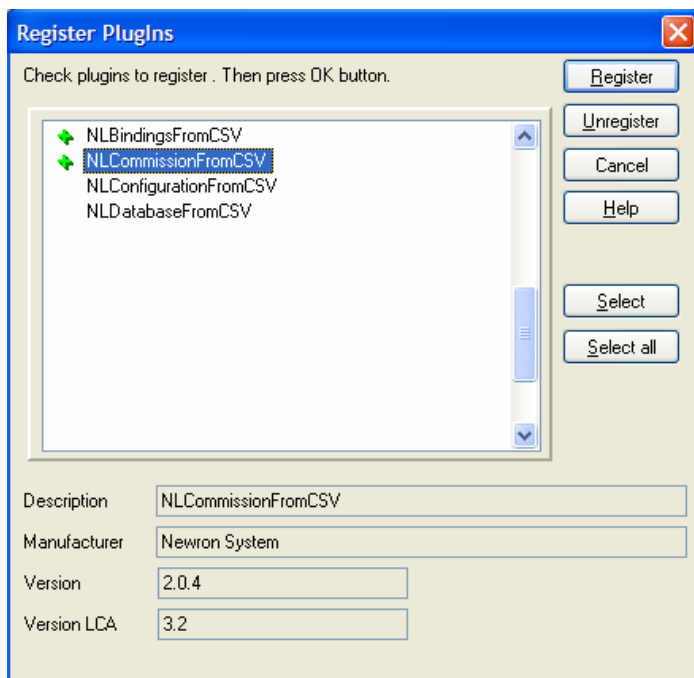
They also shall appear in the plugin registration window of your LNS manager tool.



Picture 1 : Plugin registration window


# REGISTERING CSV PLUGINS

To register a CSV plugin, double click on it in order to make a green cross appear next to the plugin's name.



Picture 2 : NL220 Plugin registration window

You can register several plugins at a time. Once you have selected all the plugins you want to register, click on the “Register” button on the right.

A green check  will appear next to the registered plugins.

# NLCSV PLUGINS PRESENTATION

## 4 different plugins

---

### **NLDatabaseFromCSV :**

Create a database from a CSV file. You can define device templates, subnets, channels, subsystems, infrastructure products and nodes.

Export a database to a CSV file. Export subsystems, nodes and routers to a CSV file. Fast database creation by copy pasting items in the CSV file.

### **NLBindingsFromCSV :**

Import bindings from a CSV file. Apply bindings from the CSV file, create new bindings or modify existing bindings' settings.

Remove bindings from a CSV file. Remove existing bindings in the database from bindings defined in a CSV file.

Export bindings to a CSV file. Export bindings from a subsystem or the whole database to a CSV file.

### **NLConfigurationFromCSV :**

Import configurations from a CSV file. Apply the configuration values defined in a CSV file to your devices in the database.

Export configurations to a CSV file. Save all database's devices configuration values to a CSV file.

### **NLCommissionFromCSV :**

Commission from a CSV file. Commission your devices with the Neuron IDs set in the CSV file.

Export Neuron IDs to a CSV file. Export Neuron IDs set in the database to a CSV file.



# NLDATABASEFROMCSV

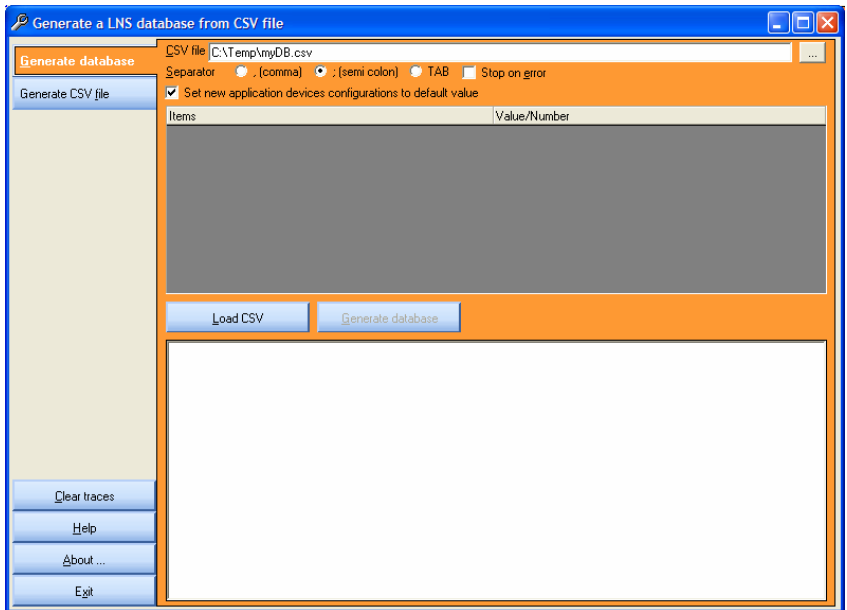
## Launch NLDatabaseFromCSV

---

To launch NLDatabaseFromCSV plugin, go to the “PlugIns” menu, and then go to “Projects Plugins” and choose “Generate database from CSV”.

## General view

---



Picture 3 : NLDatabaseFromCSV general view

The window is divided into three parts :

- The left menu, to access the two parts of the plugin and the help
- The upper right part is dedicated to the plugin settings and functionalities
- The bottom right part are where traces of the actions appear

## Generate database from a CSV file

---

### **CSV file :**

Defines which CSV file you will load to create your database.

### **Separator :**

Which separator is used ; can be comma (","), semi colon (";") or TAB.

### **Stop on error :**

If checked, loading of the CSV file will stop if it receives an error.

### **Set new application devices configurations to default values :**

Sets configuration values of the newly created devices to the default values

### **Load CSV :**

Launches loading of the CSV file defined in the "CSV file" field.

### **Generate database :**

Launches creation of the devices loaded from the CSV file.

## Export database to a CSV file

---

### **CSV file :**

Defines in which CSV file the data will be exported.

### **Separator :**

Which separator is used ; can be comma (","), semi colon (";") or TAB.

### **Stop on error :**

If checked, generation of the CSV file will stop if it receives an error.

### **Load database :**

Launches loading of the items present in the database.

### **Generate CSV file :**

Writes a CSV file defined in "CSV file" field with the items loaded from the database.

# NLBINDINGSFROMCSV

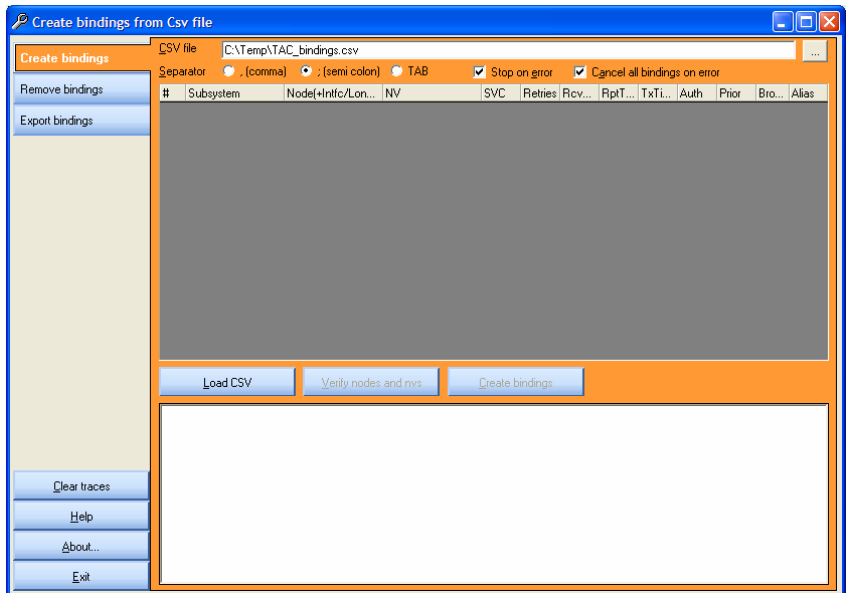
## Launch NLBindingsFromCSV

---

To launch NLDatabaseFromCSV plugin, go to the “PlugIns” menu, and then go to “Projects Plugins” and choose either “Create bindings from CSV”, “Remove bindings from CSV” or “Export bindings of project”. You can also launch the plugin on a subsystem by right-clicking on the subsystem, go to “PlugIns” and choose “Exports bindings of a subsystem”.

## General view

---



Picture 4 : NLBindingsFromCSV

The window is divided into three parts :

- The left menu, to access the two parts of the plugin and the help
- The upper right part is dedicated to the plugin settings and functionalities

- The bottom right part are where traces of the actions appear

## Create bindings from a CSV file

---

### **CSV file :**

Defines which CSV file you will load to create your database.

### **Separator :**

Which separator is used ; can be comma (","), semi colon (";") or TAB.

### **Stop on error :**

If checked, loading of the CSV file will stop if it receives an error.

### **Cancel all bindings on error :**

If checked, bindings already created before the error will be removed.

### **Load CSV :**

Launches loading of the CSV file defined in the "CSV file" field.

### **Verify nodes and NVs :**

Checks that bindings loaded from the CSV file apply on existing devices and network variables in the LNS database.

### **Create bindings :**

Launches creation of the bindings loaded from the CSV file.

## Remove bindings from a CSV file

---

### **CSV file :**

Defines which CSV file you will load to create your database.

### **Separator :**

Which separator is used ; can be comma (","), semi colon (";") or TAB.

### **Stop on error :**

If checked, loading of the CSV file will stop if it receives an error.

### **Cancel all bindings on error :**

If checked, cancels binding removal if an error occurs.

### **Load CSV :**

Launches loading of the CSV file defined in the "CSV file" field.

### **Verify nodes and NVs :**

Checks that bindings loaded from the CSV file apply on existing devices and network variables in the LNS database.

**Remove bindings :**

Launches removal of the bindings loaded from the CSV file.

## **Export bindings to a CSV file**

---

If you launch the plugin from the “Plugins” menu, all the database’s bindings will be exported ; if you launch it by right clicking on a subsystem, only the subsystem’s bindings will be exported.

**CSV file :**

Defines which CSV file you will load to create your database.

**Separator :**

Which separator is used ; can be comma (“,”), semi colon (“;”) or TAB.

**Stop on error :**

If checked, loading of the CSV file will stop if it receives an error.

**Load database :**

Launches loading of the bindings (database or subsystem).

**Export bindings :**

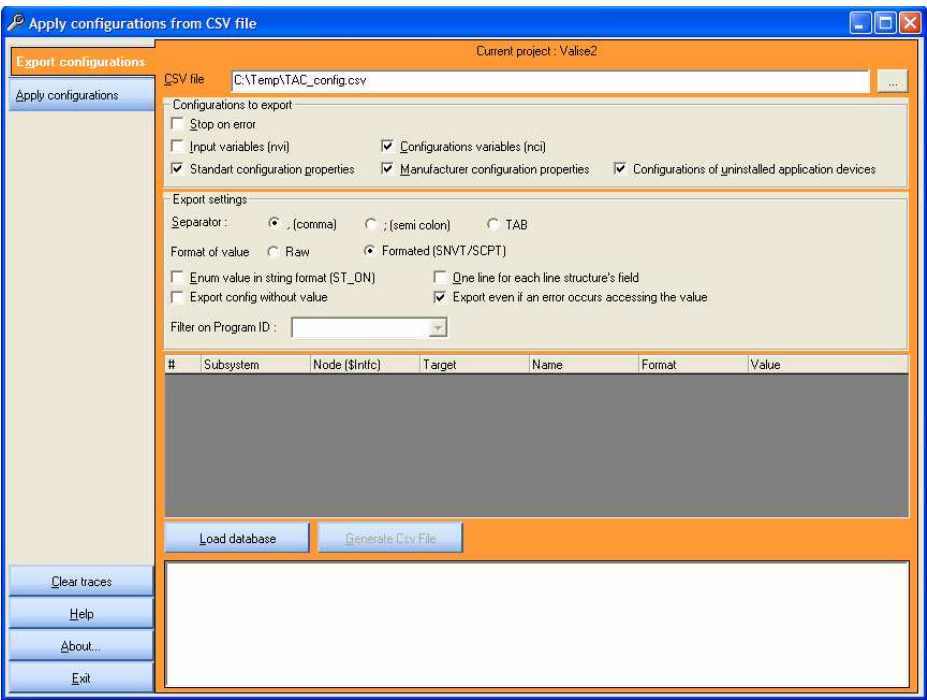
Writes the CSV file defined in the “CSV file” field with the bindings loaded from the database.

# NLCONFIGURATIONFROMCSV

## Launch NLConfigurationFromCSV

To launch NLConfigurationFromCSV plugin, go to the “Plugins” menu, and then go to “Projects Plugins” and choose either “Export configurations of project” or “Apply configurations from a CSV file”. You can also launch the plugin on a subsystem by right-clicking on the subsystem, go to “Plugins” and choose “Exports configurations of a subsystem”.

## General view



Picture 5 : NLConfigurationFromCSV general view

The window is divided into three parts :

- The left menu, to access the two parts of the plugin and the help
- The upper right part is dedicated to the plugin settings and functionalities
- The bottom right part are where traces of the actions appear

## **Export configurations to a CSV file**

---

### **CSV file :**

Defines which CSV file you will load to create your database.

### **Configurations to export :**

#### **Stop on error :**

If checked, loading of the CSV file will stop if it receives an error.

#### **Input variables (nvi) :**

Export values of input NVs.

#### **Configuration variables (nci) :**

Export values of input Configuration variables.

#### **Standard configuration properties :**

Export values of SCPTs.

#### **Manufacturer configuration properties :**

Exports values of UCPTs.

#### **Configurations of uninstalled application devices :**

Export CPs values of uninstalled devices.

### **Export settings :**

#### **Separator :**

Which separator is used ; can be comma (“,”), semi colon (“;”) or TAB.

#### **Format of value :**

Choose between Raw and Formated.

#### **Enum value in string format :**

Exports value of enumerations in string rather than the enumeration index.

#### **One line for each line structure’s field :**

Write each field of a structured value on a different line in the CSV file.

**Export config without value :**

If the value is not set, exports an "Empty value" string.

**Exports even if an error occurs accessing the value :**

If you cannot communicate with the device, exports an "Error reading" value.

**Filter on Program ID :**

If you choose "All", all devices of the database/subsystem will be exported ; if you choose one PID, only devices of this PID will be exported.

**Load database :**

Launches loading the configuration of the database / subsystem.

**Generate Csv file :**

Writes the CSV file defined in the "CSV file" field with the configurations loaded from the database.

## **Apply configurations from a CSV file**

---

**CSV file :**

Defines in which CSV file the data will be exported.

**Separator :**

Which separator is used ; can be comma (","), semi colon (";") or TAB.

**Stop on error :**

If checked, generation of the CSV file will stop if it receives an error.

**Verify format value (SNVT/SCPT) :**

Compares the format defined in the CSV file to the format of the target in the database.

**Verify length of value :**

Compares the length of the value in the CSV file to the length of the configuration on the target node.

**Modify manufacturer configuration :**

Force UCPTs update.

**Load CSV :**

Launches loading of the items present in the CSV file.



**Verify configurations :**

Verify if configurations defined in the CSV file correspond to existing configuration in the database.

**Apply configurations :**

Write CSV configuration values to the nodes.

# NLCOMMISSIONFROMCSV

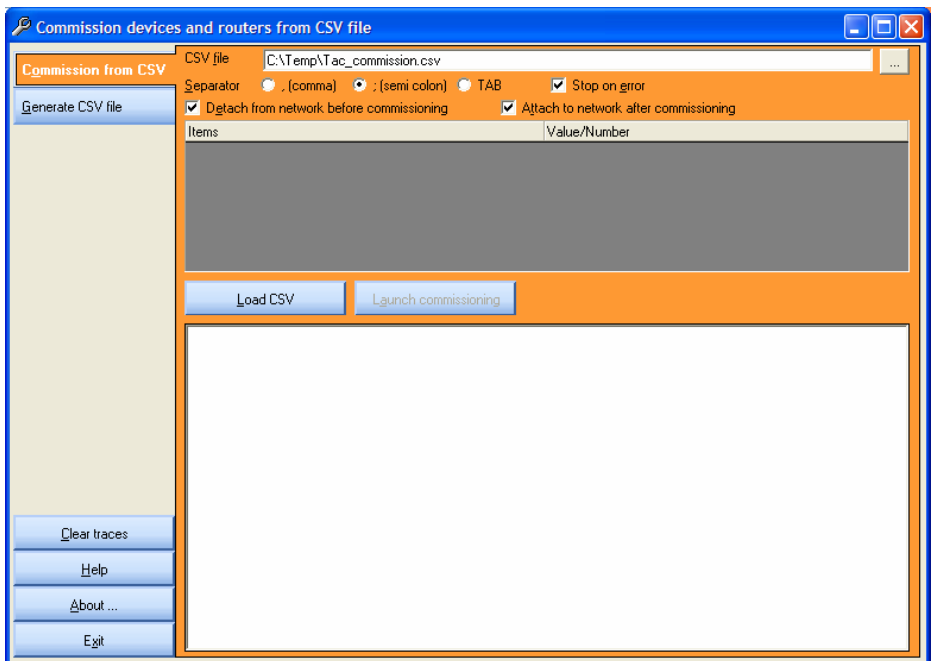
## Launch NLCommissionFromCSV

---

To launch NLCommissionFromCSV plugin, go to the “PlugIns” menu, and then go to “Projects Plugins” and choose “Commission from CSV”.

## General view

---



Picture 6 : NLCommissionFromCSV general view

The window is divided into three parts :

- The left menu, to access the two parts of the plugin and the help
- The upper right part is dedicated to the plugin settings and functionalities
- The bottom right part are where traces of the actions appear

## Commission from a CSV file

---

### **CSV file :**

Defines which CSV file you will load to create your database.

### **Separator :**

Which separator is used ; can be comma (“,”), semi colon (“;”) or TAB.

### **Stop on error :**

If checked, loading of the CSV file will stop if it receives an error.

### **Detach from network before commissioning :**

If checked, no modification is sent on the network during commissioning.

### **Attach to network after commissioning :**

If checked, re-attaches the network after commissioning.

## Generate CSV file

---

### **CSV file :**

Defines in which CSV file the data will be exported.

### **Separator :**

Which separator is used ; can be comma (“,”), semi colon (“;”) or TAB.

### **Devices to include :**

#### **Routers with a Neuron ID :**

Exports routers with a Neuron ID.

#### **Devices with a Neuron ID :**

Exports devices with a Neuron ID.

#### **Routers with no Neuron ID :**

Exports routers without a Neuron ID.

#### **Devices with no Neuron ID :**

Exports devices without a Neuron ID.

### **Default settings in CSV file :**

**Devices/routers with same Neuron ID are reinstalled /  
Devices/routers with same Neuron ID are not reinstalled**

Choose between those two options for the devices installation.

**Devices/routers are commissioned on network when installed /  
Devices/routers are not commissioned on network when installed  
(simple Neuron ID set) :**

Choose between those two options for network commissioning.

**Configurations set in LNS database are downloaded into the  
device / Configurations set in LNS database are downloaded into  
the device and manufacturer's defaults values applied to  
undefined configurations / Use only manufacturer defaults for  
devices configuration / Keep current configurations on device :**

Choose between those four options to update configuration properties  
of the devices during network commissioning.