

e-Bus Coupling Surface SA

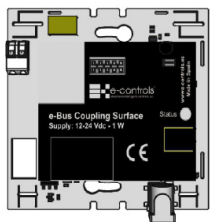
Stand-Alone coupling unit for mounting AirQaly Sensor

Product reference: BC.400000-031

e-Bus Coupling Surface SA is a stand-alone coupling unit to connect to an AirQaly sensor. The equipment is connected to the electrical network through a plug power supply and provides the necessary voltage and current for the operation of the AirQaly sensor.

Instructions sheet

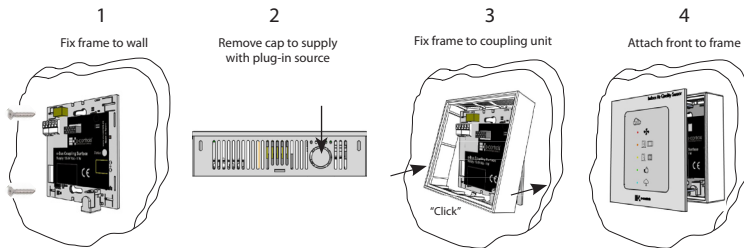
EN



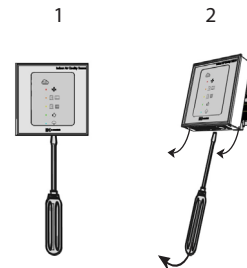
INS1021506000000

Installing the product (continuation)

Installation process:



Product disassembly:



Product description

The **e-Bus Coupling Surface SA** equipment is responsible for providing the necessary power supply to the AirQaly sensor for its operation. This product model has no inputs or outputs for operation. See other coupling unit models for more information of the available outputs and communication buses.

The equipment is connected through a jack connector to the power supply **ref. FAP-12W-12V**, which includes a plug to connect directly to mains. Optionally the equipment can be powered with a DIN rail type power supply **ref. FA-15W-24V** and use the internal terminals of the device to power it.

LED operation indicator

The unit includes a led indicator on the front panel called Status, which has the following statuses:

- Normal operation: When the equipment is powered on, it turns on and after a few seconds it turns off.
- Air Qaly disconnected: The led makes a brief blink every two seconds.
- Configuration fault: This fault occurs if the AirQaly front end has been configured with a different frame than the one connected. In this case, the LED flashes every second.
- Internal Air Qaly fault: The LED lights up for more than 6 seconds.

Equipment setup

This product model does not require configuration.

Installing the product

The equipment is designed to mount directly on the surface, fixing the holes in the equipment with 2 screws. The AirQaly front frame acts as a product box, being protected once it is fully installed.

The cables connecting to the equipment must not have a section greater than 0.5mm².

Installation process

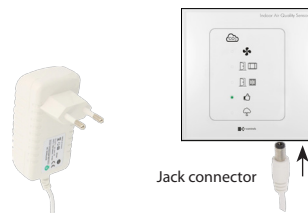
1. Fix the e-Bus Coupling Surface device to the wall. If the device is powered with a DIN rail power supply, pass the cables through the hole on the coupling unit (see installation diagram).
2. In case of powering the device with the plug-in power supply, break carefully the small circular cap cover in the bottom part of the frame, to later plug the power supply connector.
3. Fix the frame to the coupling unit fixing it on the upper part and pressing lightly on lower part until you hear a "click".
4. Insert the AirQaly sensor centred on the frame, previously inserting the label supplied with the sensor, in the front of the equipment.
5. Power the equipment and wait 5 minutes to obtain a correct measurement.

Precautions:

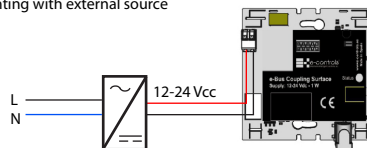
- Disconnect the device from the supply voltage before mounting or moving the equipment.
- Do not leave bare or wrapped cables around the equipment.
- Do not connect the device with wet hands.
- Do not open or pierce the product.
- Keep the device and cables away from moisture and dust.
- Do not expose the equipment to direct solar radiation.
- Use the equipment in pollution-free environments and in atmospheric pressure environments within the permitted levels.
- Avoid sudden blows on the equipment.
- Keep the equipment's ventilation windows clean using a cloth or with pressurised air.
- Power the equipment with the recommended power source and always with a very low voltage isolated power source.

Installation diagram

Mounting with plug-in source



Mounting with external source



Technical specifications

Power supply

Operating voltage	12-24Vdc
Maximum consumption	1 W
External connector	Jack type
Internal connector	Terminal type
NOTE: Use the power supply FAP-12W-12V or power supply FA-15W-24V	

Mechanical characteristics

Dimensions	78x78x15mm
Installation type	Surface
Weight	60 g.
External connector	Jack type
Connection terminals	Terminal type
Cable section	Maximum 0.50mm ²

Working temperature

Operation	0°C to + 50°C
Storage	-20°C to +85°C

Humedad (sin condensación)

Operating	10% to 90% RH a 50°C
Storage	95% RH a 50°C

Product family standards

Automatic electrical control devices for household and similar use EN 60730-1

CE conformity

Mark CE

Security

Standard EN 60730-1
 IEC Protection Class III

EMC

Emissions EN 61000-6-3
 Immunity EN 61000-6-1

Purchase reference

e-Bus Coupling Surface SA, Stand-alone coupling unit for Air Qaly mounting. 12-24 Vdc power supply with external jack connector BC.400000-031
Plug-in power supply, with jack connector for AirQaly. Input voltage 100-240Vca, Output 12 Vdc FAP-12W-12V

Related items

DIN rail power supply, Input voltage 85-264 Vac, 47/63 Hz, 24 Vdc output FA-15W-24V
Desktop mounting box, white plastic box for mounting the AirQaly sensor on desktop AC.000040-000

The packaging of this product is considered an industrial container, with the recipient being a professional. The manufacturer is not responsible for the incorrect use or installation of the product. Read this document before installing the product. Document subject to changes without prior notice.

